

Airflow Monitors for the 21st Century



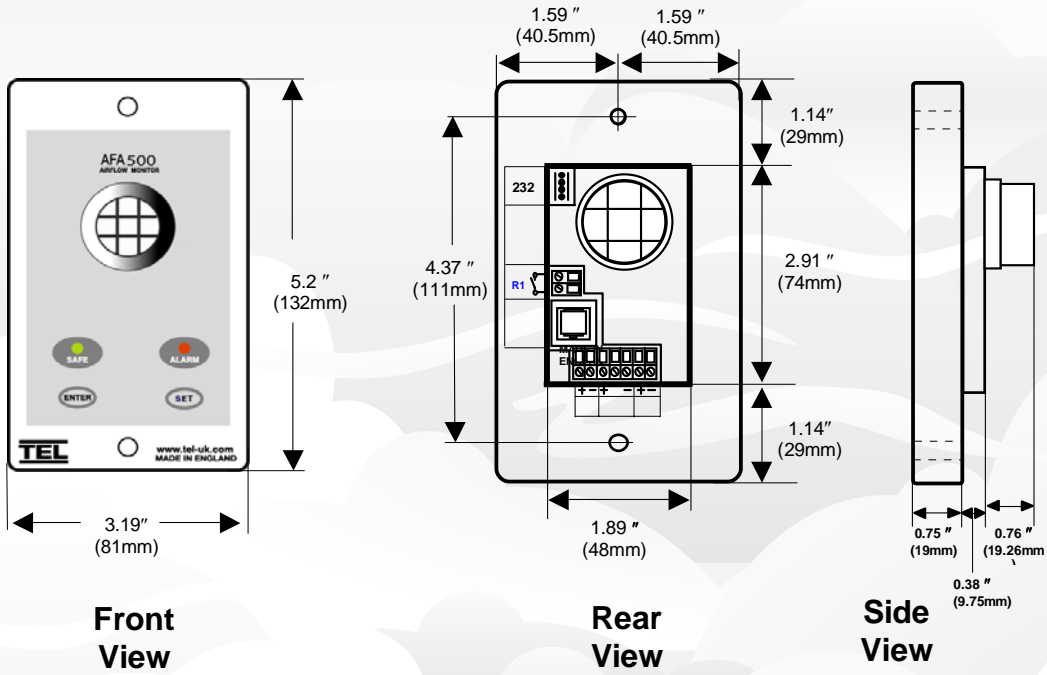
**AFA500
Mk3**



Specifications— AFA 500 Mk3

Alarm range	30-400 fpm (.15 -2.0 m/s)
Accuracy	Face velocity accuracy +/- 10%
Airflow sensor	On-board or Remote sensor
Calibration	Single or 2-point (Installer selectable)
Low Air Alarm delay	Fixed 5 secs
Relay output	1 - (Low Air alarm)
Analog output	Not available
Relay input	2 – Night setback & Sash High
Comm. Port	RS232 – Can be connected via Serial interface to LAN network (Full hood performance software reporting available)
Sash high indication	Yes -- using a Micro switch or Proximity switch input With repeat alarm feature factory set to 5 min. (Can be adjusted via laptop up to 30 mins)
Night setback	Yes – using a relay input
External alarm indication	Not available
Power Requirement	Input—120VAC, 60Hz Output—15VDC, 500ma
Display—visual	LEDs: red, alarm; green, normal
Alarm indication	Red LED & audible alarm
Horn silence	Yes - Temporary
Mounting	Semi Flush
Operating temperature	55-86°F (13-30°C)
Storage temperature	-40-150°F (-40-65°C)
Instrument dimensions	Instrument Case: 5.2” H x 3.19” W x 1.97” D (132mm H x 81mm W x 50mm D)
Agency listings	CE

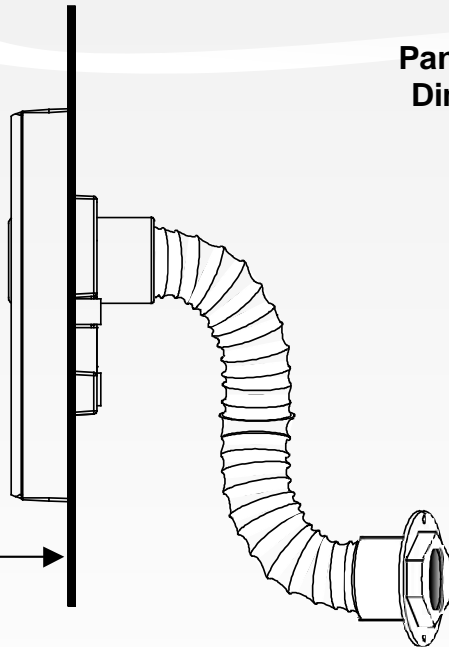
Alarm Panel Dimensions



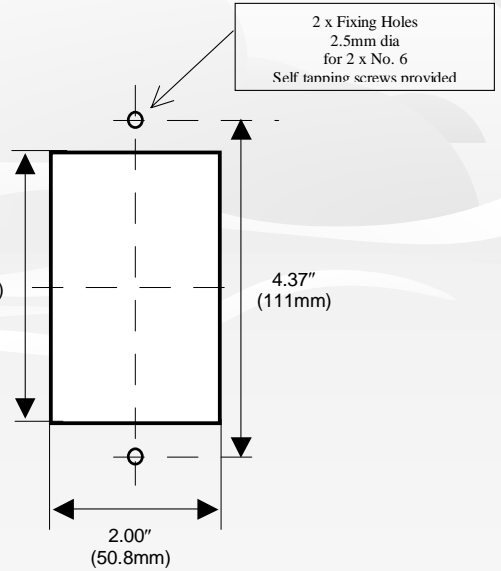
AFA 500 Mk 3

AFA500 Mounted on front of side post

Front of side post

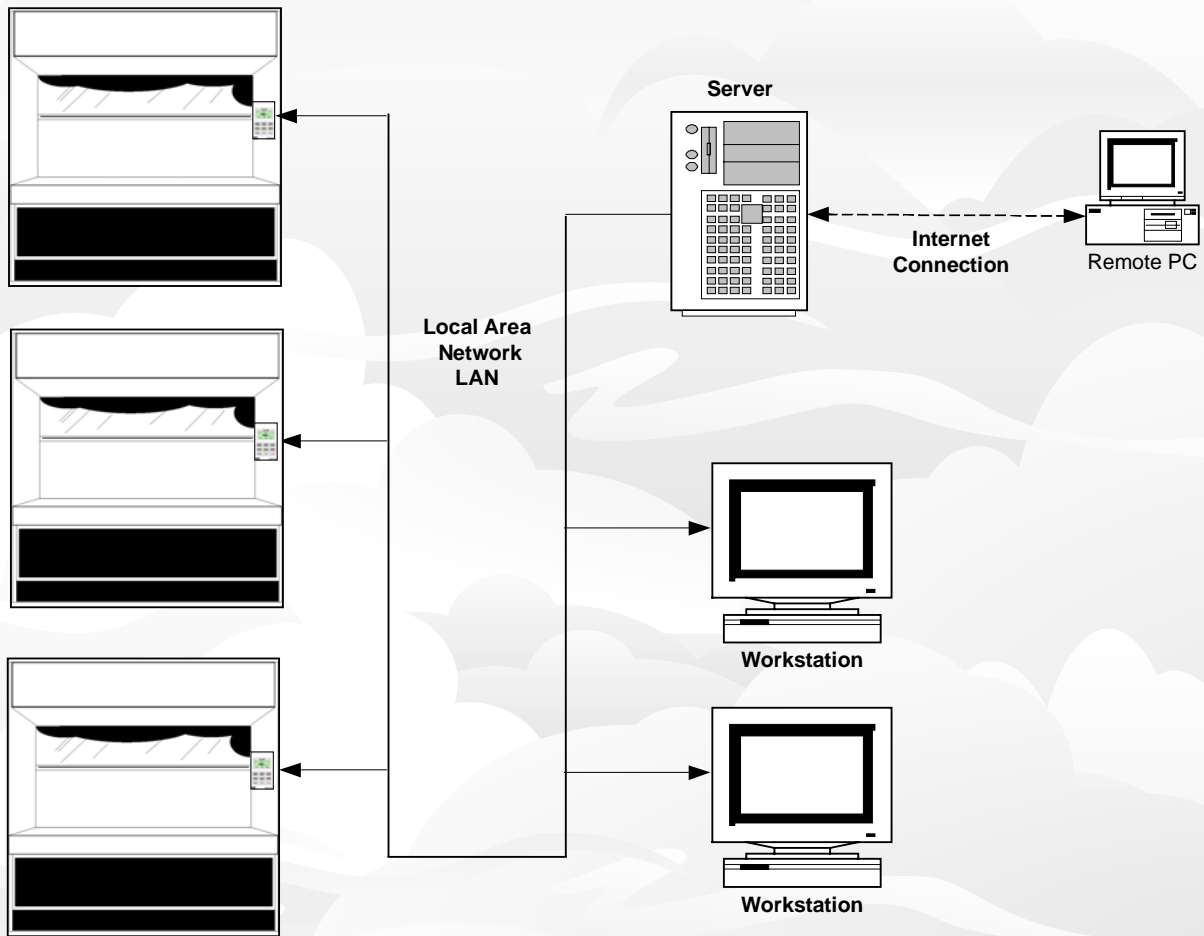


Panel Cutout Dimensions 3" x 2"



Adapter through Inner side wall

AFA 500 -- Communication via Computer Systems



The **AF500** Airflow Monitor can be connected via the com port to a Laptop Computer or to any PC on the local network (LAN) using our dedicated software.

The Laptop is normally used for local adjustments of the monitor parameters.

The PC Network Software (iNET) allows the any PC on the existing network to access the monitor or groups of monitors for the following functions :-

- **Download / Upload monitor controls / parameters**
- **Diagnostics**
- **Data Logging of alarms or events**
- **Remote access via the Internet**
- **Connection to a BMS**

For further information contact us at :-

TEL

Web site : www.tel-uk.com

HSE

HOLLAND SAFETY EQUIPMENT
726 McKinley Ave
Libertyville , Illinois 60048

Phone: 847 680 9930 Fax: 847 680 9938

e-mail : info@hollandsafety.com

web site : www.hollandsafety.com